

BERMUDA CANCER AND HEALTH CENTRE  
46 POINT FINGER ROAD  
PAGET, DV 04, BERMUDA



Bermuda  
Cancer and  
Health Centre

DETECTION PREVENTION SUPPORT

Bermuda Cancer and Health Centre

DETECTION PREVENTION SUPPORT

BERMUDA DIABETES ASSOCIATION  
BERMUDA OSTOMY ASSOCIATION  
JUST BETWEEN US

46



# ANNUAL REPORT 2015

**TO BE A CENTRE OF EXCELLENCE OFFERING  
COMPREHENSIVE BREAST SPECIALIST SERVICES  
AND PROVIDING EARLY DETECTION, SUPPORT AND  
EDUCATION FOR CANCER AND OTHER DISEASES**



**Bermuda  
Cancer and  
Health Centre**

DETECTION PREVENTION SUPPORT



# NDING LIBRA

## CONTENTS

FORWARD <i>by the Chairman</i>	4
REVIEW <i>by the Executive Director</i>	5
RADIATION THERAPY	6
RELAY FOR LIFE OF BERMUDA	8
BREAST CANCER AWARENESS MONTH	10
MOVEMBER	12
ST. BALDRICK'S	13
EDUCATION AND AWARENESS	14
DIAGNOSTIC IMAGING	16
CERTIFICATIONS	18
DONATIONS	19
BOARD OF DIRECTORS	21
AUDITOR'S REPORT <i>by KPMG Audit Limited</i>	22
FINANCIAL STATEMENTS	24

# FORWARD



**GLEN GIBBONS**  
CHAIRMAN OF THE BOARD

“WE STRIVE  
TO ENSURE  
THAT FEWER  
PEOPLE GET  
CANCER”

Each year Bermuda Cancer and Health Centre (the “Centre”) works for, and on behalf of, those affected by cancer in our community. We strive to ensure that fewer people get cancer, while supporting those who need our assistance by providing the best care, treatment, information and support.

In 2015 the Centre advanced its strategic initiative to introduce external beam radiotherapy to Bermuda. Radiation therapy is a useful tool for curative and palliative cancer care and, with over 300 people diagnosed with cancer in Bermuda each year, this important service will mean that no one will need to go without care because of lack of access.

In May 2015 the Centre held its second annual Relay For Life event. Over 4,000 people participated in the 24 hour event and raised \$567,523. In addition to the \$440,000 raised in 2014, over \$1 million dollars has been allotted to the radiotherapy initiative.

The generosity of our community enables us to support cancer patients in providing early cancer detection services and also to promote continued awareness regarding cancer prevention.

I am proud of our achievements, yet humbled by the continued level of support by donors, volunteers and staff members.

It is not possible to carry out our mission without the amazing support of so many people across Bermuda. On behalf of the Board of Directors, I want to give a heartfelt thank you to our donors, volunteers and staff members who work at the Centre supporting our mission. I am pleased to present this annual report for Bermuda Cancer and Health Centre, together with the audited financial statements for 2015.

A handwritten signature in black ink that reads "Glen P. Gibbons".

Glen Gibbons  
Chairman of the Board of Directors  
Bermuda Cancer and Health Centre

# REVIEW

On behalf of the volunteers, donors and staff of the Centre I am pleased to present my report for 2015.

It has continued to be our foremost priority to create a stable, financially secure course for the future. Our strategic goals, clinical services and early cancer detection programmes are designed to ensure we stay on target to achieve world class cancer services locally while remaining focused on our mission of providing education, awareness and prevention programmes for our community. Our Centre continues to seek methods which help us to limit our expenses and in 2015 the Centre realized a modest deficit \$13,960.

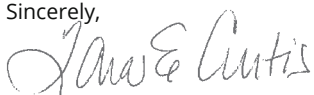
During 2015 the Centre continued with its initiative to bring radiation treatment to the island so that all Bermuda residents will have access to cancer treatment, regardless of their ability to pay. At the end of 2015 the Centre had entered into a collaborative agreement with the Bermuda Hospitals Board for the sharing of oncology services which will provide for more comprehensive patient care. The Centre also entered into an agreement with the Dana Farber / Brigham and Women's Cancer Centre to provide project management oversight for the new radiotherapy facility. Thus ensuring the facility will meet all international and best practice standards.

According to the Bermuda National Tumor Registry, there were 312 cases of cancer reported in 2015. Operationally, our Centre conducted nearly 12,000 patient appointments for digital mammography, ultrasound, bone density and breast and prostate biopsies and a significant portion of the cancers detected in Bermuda were diagnosed at the Centre. Of the 16 employees at the Centre, 10 support our clinical services with the remaining 6 staff members supporting our clinical, education, accounts and administrative areas.

Our fundraising events continue to be well supported by our community and, such support ensures the Centre has the latest equipment in cancer detection to serve our community.

The work conducted by the Centre would not be possible without the on-going and dedicated support of many. I want to thank our staff for their passion, dedication and professionalism and our many volunteers for donating their time and expertise. I also want to thank our many partners and donors, as well as numerous agencies and organisations who continue to support us. Lastly, I want to thank the Board of Directors for their support and abundant dedication to advance our mission.

Sincerely,



Tara E. Curtis  
Executive Director



**TARA CURTIS**  
EXECUTIVE DIRECTOR

“THERE  
WERE 312  
CASES OF  
CANCER  
REPORTED  
IN 2015”

# RADIATION THERAPY

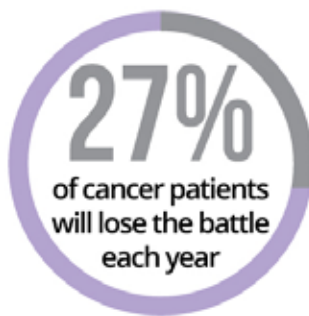
## THE PROJECT TO BRING RADIATION THERAPY TREATMENT TO BERMUDA AT THE CENTRE IS AN ONGOING INITIATIVE THAT HAS MADE GREAT PROGRESS IN 2015.

Radiation therapy is one of the pillars of cancer treatment and an essential component of a comprehensive cancer care pathway. It is needed in 60-70% of cancer patients and over half of all newly diagnosed cases. 40% of cancer cures are obtained using radiation. It is also an essential part of the palliative care needs of cancer patients with metastatic disease. It is a simple and highly effective treatment for cancer pain, bleeding and shortness of breath.

**1 IN 3** | **1 IN 2**  
**WOMEN** | **MEN**  
**WILL HAVE A CANCER  
DIAGNOSIS IN THEIR  
LIFETIME**

### CANCER TREATMENT IN BERMUDA

In Bermuda, an estimated 300 people are diagnosed with cancer every year and an estimated 80 people will lose their battle with cancer annually. According to the American Cancer society 1 in 3 women and 1 in 2 men will have a cancer diagnosis in their lifetime. With 27% of those people who have ever been diagnosed with cancer losing their battle with cancer each year, we believe the severity of cancer in Bermuda is significant.



Based on an estimated 300 cancer diagnoses per year approximately 180-200 would be referred for radiation therapy. Up to 180 of those cases could be treated here in Bermuda with the proposed plans at the Centre. By comparison, around 90-110 patients are referred from King Edward Memorial Hospital for overseas radiation therapy each year. The difference in actual treatments conducted is likely to have many causes. It has been shown that radiation therapy is under-utilised when there is significant travel involved for patients and when local physicians don't have experience in seeing the benefits of radiotherapy. These are both factors relevant to the Bermudian population. It is also well known that those patients with basic insurance or no insurance will not be able to afford radiation provided overseas. Having radiotherapy available in Bermuda provided through a not-for-profit organization in a position to treat all patients regardless of their insurance status will mean these barriers will be removed.



**BASED ON AN ESTIMATED 300 CANCER DIAGNOSES PER YEAR,  
APPROXIMATELY 200 ARE REFERRED FOR RADIATION THERAPY.**

# PLANNING FOR THE FUTURE

## CLINICAL AFFILIATIONS

In September 2015 Bermuda Cancer and Health Centre (the "Centre") and Dana Farber / Brigham and Women's Cancer Center announced plans to partner on the development of a Radiation Therapy Treatment programme.

The affiliation has been a very important phase in developing a Radiation Therapy Facility for the local treatment of cancer patients in Bermuda. The collaborative clinical affiliation with the Dana Farber / Brigham and Women's Cancer Center, ranked 4th in the United States for cancer care, by the US News and World Report will ensure the Centre will provide the highest quality level of cancer care on Island.

Experts from the Dana Farber / Brigham and Women's Cancer Center are advising the Centre on issues related to the development of the programme, including design of a facility, the creation of clinical radiation oncology policies, procedures and safety protocols. The collaboration will also assist in developing training and education programmes and will also explore opportunities to participate in research as well as telemedicine programmes.

## BENEFITS OF THE FACILITY

The benefits for the local community, patients and loved ones will be multifold by having a Radiation Treatment Facility on the island. Patients will no longer need to travel overseas for six to eight weeks to receive treatment. The average treatment takes only a few minutes per day and most patients tolerate radiation therapy very well and will be able to continue to work during the treatment. Having this treatment here also means that patients will be able to carry on with an increased sense of normality.

## THE RADIATION THERAPY FACILITY WILL BE COST EFFECTIVE

This new facility is being constructed by the Centre, which is one of Bermuda's longest standing charities. Our mission is to serve our community and improve access to care where possible. As a not-for-profit our goal is to cover the cost to build the facility, through donations and fundraising and to cover annual operating costs through health insurance reimbursements and continued fundraising primarily from the Relay For Life of Bermuda event. It is the expectation that significant savings to health care costs will be realized as a result of this treatment being provided locally.

We thank our community for their continued support in helping to make this initiative happen!





# RELAY FOR LIFE OF BERMUDA

TOTAL NET AMOUNT RAISED IN 2015:

# \$567,523

**THE MISSION** of Relay For Life of Bermuda is to raise awareness and funds to support cancer prevention and detection and to improve access to treatment with the local establishment of radiation therapy.



## RELAY FOR LIFE OF BERMUDA

Relay For Life of Bermuda 2015 was the second annual Global Relay event for the Centre. There was significant growth in both numbers of people and dollars raised. As most of the aspects of the fundraiser remain the same year over year, the one that did change was the mission. The announcement of the radiation therapy initiative had a resounding impact on residents who have been affected by cancer and really motivated teams when fundraising.

## OUR SPONSORS AND DONORS

Generous donations were made to the cause by our Presenting Sponsor, Ironshore, along with various other corporate partners, alliances, organisations and individuals who all played a role in the success of Relay For Life of Bermuda 2015. The teams themselves fundraised prior to the event and on the day from their themed sites. We also received corporate matching donations, luminaria purchases and donations in kind. These donors made this event possible and a success!



# WITH THE HELP OF OUR COMMUNITY, WE KNOW WE CAN MAKE A DIFFERENCE IN THE FIGHT AGAINST CANCER FOR OUR ISLAND.

## SURVIVOR LAP

The event kicks off with the Survivor Lap where cancer survivors take to the track as other team members stand around the track and applaud them. The goosebump raising ceremony is a silent reminder about why we are fighting.



## LUMINARIA CEREMONY

As the lights are dimmed, the soft glow from the candle lit personalized bags guided people around the track as everyone silently walks. Finding their bags, people pay tribute to those we have lost to cancer in Bermuda.



## FIGHT BACK CEREMONY

Towards the end of the 24 hours, the inspiring Fight Back Ceremony is held where participants are urged to take action and make a commitment to keep fighting against cancer, for our loved ones and the Bermuda community.



## CLOSING CEREMONY

During the Closing Ceremony, participants are asked to stop where they are, turn around and walk in the opposite direction around the track. This concludes the emotional and community bonding 24 hour event.



## FUNDS RAISED

As with all Relay For life events worldwide, 5% of funds raised are provided to the American Cancer Society to support global initiatives including finding a cure for cancer. The remaining 95% of the funds will go to support cancer prevention and detection and to improve access to treatment with the local establishment of radiation therapy.



# BREAST CANCER AWARENESS MONTH



TOTAL AMOUNT RAISED IN 2015:

# \$287,000

Breast Cancer Awareness month is the perfect opportunity to raise awareness about the importance of screening and the early detection of breast cancer. The Centre's campaign is to educate the community and raise awareness about the importance of screening and early detection in the hope of reducing the incidence of breast cancer.

## BF&M BREAST CANCER AWARENESS WALK



The popular BF&M Breast Cancer Awareness Walk was well attended by over 1400 participants. This year's walk was all about "Making Strides" in the fight against the disease that affects 1 in 8 women. Women, men, and children of all ages walk together to celebrate the lives affected by breast cancer. It's a powerful and inspiring opportunity to unite as a community to honor breast cancer survivors, raise awareness, and raise money to help Bermuda Cancer and Health Centre achieve its mission for the month of October.



## **GIRLS NIGHT IN**

Girls Night In events, hosted by women across the island, are an opportunity for women to get together and celebrate each other and raise money for a good cause. We are once again pleased to congratulate the Bosom Buddies for raising an incredible total of \$80,281 during their 10th Annual "Girls Night In" fundraiser. The total raised by all the events hosted was \$97,418.

## **WEAR IT PINK DENIM DAY**

The Wear it Pink Denim Day event is held annually on the first Friday of October. Businesses, organisations and schools across Bermuda are encouraged to allow employees, members and/or students to wear denim and wear a Breast Cancer Awareness sticker in exchange for a suggested \$5 donation. \$13,995 was raised this year.

## **ANNUAL RAFFLE**


The Annual Raffle is always a favourite with the residents of Bermuda with our main prize being a \$10,000 travel certificate. With the generous support of our volunteers we raised \$29,565.

## **FISH FRY**

The Annual Fish Fry hosted by Christ Church in Warwick is run entirely by volunteers in support of Breast Cancer Awareness month. Patrons can drive through and pick up their meals or stay and enjoy a family fun filled evening at the church.

## **FUNDS RAISED**

The funds raised during the month of October 2015, supported the Centre's charitable outreach programmes which includes the Equal Access Fund and our education and awareness programmes. The Equal Access Fund provides financial support for uninsured and underinsured men and women to receive recommended cancer screening and diagnostic services available at the Centre. The Centre's Education and Awareness Programmes provide free cancer prevention information to the community.



**IT'S A POWERFUL AND INSPIRING OPPORTUNITY TO UNITE AS A COMMUNITY TO HONOR BREAST CANCER SURVIVORS, RAISE AWARENESS, AND MONEY TO HELP THE CENTRE ACHIEVE ITS MISSION FOR OCTOBER.**

# MOVEMBER



**TOTAL AMOUNT RAISED IN 2015:**

# \$22,025

This year marks the fifth Movember movement. This year, the trophy awarded to the top fundraising team went to Robin Hood Football Club. With the support of our sponsors, Flanagan's and The Cutting room, our MoBros, MoSistas, and Mo Teams we were able to raise money to help raise awareness for men's health in Bermuda. This month long event encourages men to take an active role in their health.

The funds raised through the Movember movement supported two different programmes in 2015:

## FREE MEN'S HEALTH SCREENINGS

This year, we had over 200 men attend our 4th Annual Free Men's Health Screening event. We were able to provide services to the men in our community who are unable to normally visit the doctor. Thanks to the support of Government Health Departments, numerous charities, private physicians and corporate sponsors, men had the opportunity to access the following:

HIV Status	Body Composition
Blood Pressure	Nutrition
Blood Glucose	Foot Exam
Skin Analysis	Protein Testing
Lung Function	Physician Consultation
Dental Screening	Prostate Exam

## DOCTOR VOUCHER PROGRAMME

The Doctor Voucher Programme was brought back this year as the Centre noticed a void that needed to be filled in the community. Given out at our Men's Health Screening event, these vouchers enable uninsured and under-insured men access to physician's island wide with the cost being subsidised by our Centre. They are valid towards a doctor's visit up to \$150.

# ST. BALDRICK'S

TOTAL AMOUNT DONATED IN 2015:

# \$48,000

For the Second year in a row, Bermuda Cancer and Health Centre was the recipient of the St. Baldrick's Foundation Bermuda's fundraising efforts.



Since 2005, the St. Baldrick's Foundation has funded more than \$178 million in research grants to find a cure for childhood cancers. Worldwide, a child is diagnosed with cancer every three minutes and more children are lost to cancer than any other disease. Fifty years ago, almost all kids diagnosed with cancer died but because of research, approximately 85% of children with the most common type of cancer such as acute lymphoblastic leukemia will live today.

A number of organisations and individuals came together to shave for the cause that supports childhood cancer research. The St. Baldrick's Foundation kicked off its 9th annual head shaving event at Saltus Grammar School where more than 80 students, staff, and relatives participated in the event. Saltus participants raised close to \$250,000. The Docksiders event also raised over \$183,000 and Warwick Academy held their first annual event as well raising almost \$60,000.

The events raised money for children's cancer research overseas, with \$48,000 of the funds being allocated to Bermuda Cancer and Health's SunSmart Programme, a school and summer camp based programme teaching sun protective behaviours. Non-profit hairpiece maker, Locks of Love, also benefitted as several students, relatives, and teachers donated their hair to provide hair pieces for children with long-term medically related hair loss.



# EDUCATION & AWARENESS

## SUNSMART

### ABOUT THE SUNSMART PROGRAMME

The Centre is Bermuda's leading advocate in working towards nationally accepted sun protection policies within our schools, clubs, camps and workplaces. As the only organization on the island dedicated to providing sun safety awareness and education for the community, the programme is incredibly important. Our popular Slip! Slap! Slop! Seek! Slide! campaign is successfully helping to reduce sun exposure and teaching children to protect themselves against an increased risk of skin cancer. On average, the programme is delivered to 40-50 preschools and primary schools island wide each year, as well as a number of middle schools and high schools.

### FUNDING

The SunSmart Programme is funded solely by the St. Baldrick's Foundation with \$48,000 that is generously donated every year. Without this funding, the Centre would not be able to reach the thousands of students to educate them on skin protection and recognising potentially dangerous changes in their skin.

### AMERICA'S CUP ENDEAVOUR PROGRAMME

This year marks the beginning of the Centre's partnership with the America's Cup Endeavour Youth Sailing programme which caters to first year middle school students. For the next two years, the Centre is providing weekly presentations, hats and sunscreen, with the potential of the youth programme continuing beyond the America's Cup Series.

### SUNSMART SUMMER CAMP PROGRAMME

Introduced in 2010, the Centre's summer camp accreditation programme is in high demand. Participating camps receive free sunscreen and bucket caps for their campers. Camps that complete the programme and fulfill all requirements are awarded accreditation by the Centre for documented and observed sun safety measures at their individual camps.

### UV INDEX MONITORING

July 2014, marked the official launch of the UV Index monitoring by the Bermuda Weather Service (BWS). The SunSmart programme played a large role in education and public awareness. In 2015, the Centre assisted BWS in obtaining its very own UV Radiometer. Bermuda now has accurate recordings of the UV Index in real time that is available to the public to view on BWS website. We are continuing to work closely with BWS to provide consistent up to date UV Index readings and awareness to the general public.

## SUNSMART MISSION

To Increase the awareness of Bermuda's youth about the importance of practicing SunSmart behaviours in order to reduce their risk of developing skin cancer in their lifetime.



## LUNGSMART

LungSmart, is a school based programme aimed at reducing the number of school aged children who begin smoking (as measured by the Bermuda National School Survey), and to encourage those who already smoke to become tobacco-free. In 2015, a total of 3 Middle Schools, 2 Home Schools, and 12 Primary Schools were visited and the programme was delivered to almost 400 students.

The LungSmart programme uses a variety of interactive methods including PowerPoint presentation, “Hands on” examination of real pig’s lungs, and role play to educate students on the many health dangers associated with smoking including for persons exposed to second-hand smoke.

## CANCER INFORMATION SERVICE (CIS)

Residents of Bermuda have access to our free Cancer Information Service, provided through our partnership with the Canadian Cancer Society. Cancer touches many lives and we know that many Bermuda residents have a lot of questions about what it means to them and their loved ones. By simply dialing 232-2247 users will be connected with a trained and knowledgeable cancer information specialist. Cancer information and support options are available such as:

- Types of cancer
- Cancer treatments/Side effects
- Clinical trials
- Coping with cancer
- Emotional support services
- Prevention
- Help in the community
- Complementary therapies



## LECTURE AND PUBLIC PRESENTATIONS

The Centre supports the community by participating in Health Fairs and organising Wellness talks to corporate, government, civic, church and school PTA groups as requested. Staff attended a total of 10 Health Fairs and gave 6 Wellness talks during the year. We offer free public presentations and corporate lunch and learns promoting the message that cancer is preventable, treatable and beatable.

## LENDING LIBRARY

Our library offers a comprehensive and complete guide to all things cancer. Located on the ground floor of the Centre, the library offers more than 800 books and DVDs covering a wide range of cancer and health topics. This library is particularly of interest to those who have recently been diagnosed or know someone who has been diagnosed with cancer. We have a wide variety of books that cater to all different types of cancer.





# DIAGNOSTIC IMAGING

**AT BERMUDA CANCER AND HEALTH CENTRE WE ARE COMMITTED TO OUR MISSION OF EARLY DETECTION, PREVENTION AND SUPPORT.**

The Centre offers a full range of clinical services provided by our dedicated and highly trained staff. All of the below listed services are 100% covered by insurance. For those who are uninsured or underinsured, the Centre provides free confidential donations to help cover the cost of important screening and diagnostic tests.

## DIGITAL MAMMOGRAPHY

Digital Mammography remains the gold standard for breast cancer screening and Bermuda Cancer and Health Centre is pleased to offer this state-of-the-art service. We offer both screening and diagnostic mammograms. Female patients, over the age of 40 years, are encouraged to speak to their doctor about the best screening protocol for them.



## BONE DENSITOMETRY

Bone density testing is used to assess the strength of the bones and the probability of a fracture in persons at risk for osteoporosis. The bone mineral density scan is a non-invasive procedure that takes just a few minutes. The Centre offers one of the most accurate bone density tests available and assists in the diagnosis of bone mineral loss at an early stage.



## BREAST BIOPSIES

A breast biopsy is a minimally invasive procedure to remove a small sample of breast tissue for laboratory testing. This on-site procedure is designed to reduce the amount of time and anxiety experienced from the moment a breast abnormality is detected. Each patient will receive personal and confidential service from our dedicated team of professionals.



## PROSTATE BIOPSIES

A prostate biopsy is a procedure in which prostate gland tissue samples are removed with a special biopsy needle to determine if cancer or other abnormal cells are present. This procedure is conducted in our dedicated ultrasound suite.



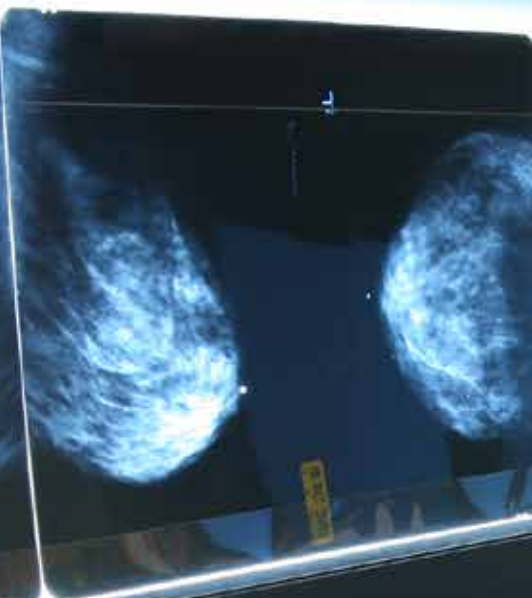
## ULTRASOUND

Ultrasound is a diagnostic tool which is used to assist in the detection of cancer. We offer a full range of ultrasound services such as breast, gynecological, abdominal, testicular, prostate and soft tissue in our Mary-Jean Mitchell Green Ultrasound Suite.

2

5

RMLD



6

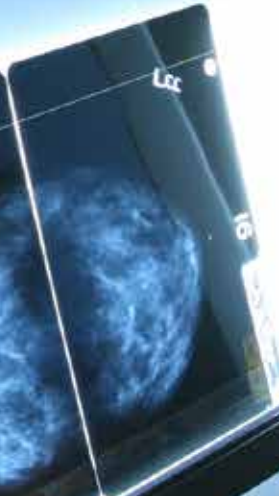
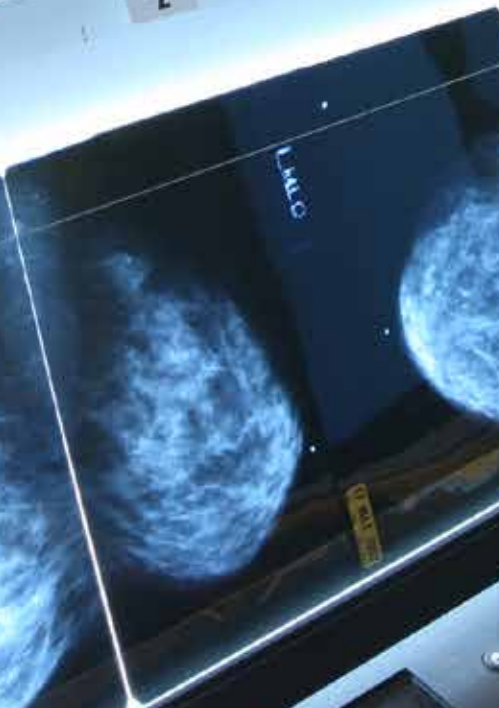
LCC

18 OCT 2005

2

RMLD

4



6

LCC

18 OCT 2005

Control panel of the mammography unit, featuring a small LCD screen, a numeric keypad, and various function buttons.

# CERTIFICATIONS

WITH OUR UNDERLYING GOAL TO SUPPORT AND IMPROVE HEALTHCARE SERVICE IN OUR COMMUNITY, THE CENTRE CONTINUALLY STRIVES FOR EXCELLENCE, MAKING IMPROVEMENTS TO OUR SERVICES AND PROGRAMMES WHILE MEETING BOTH INTERNATIONAL AND LOCAL STANDARDS.

## BREAST IMAGING CENTRE OF EXCELLENCE

In 2013, The Centre earned the Breast Imaging Centre of Excellence designation from the American College of Radiology (ACR). Since 1987, the ACR has accredited more than 35,000 facilities in 10 imaging modalities. Through the ACR, the Centre has earned accreditation in mammography, stereotactic breast biopsy, and breast ultrasound (including ultrasound-guided breast biopsy). Centres designated as an ACR Breast Imaging Centre of Excellence have:

- Voluntarily gone through a rigorous review process to be sure they meet nationally accepted standards
- Employed personnel who are well qualified, through education and certification, to perform and interpret medical images and administer radiation therapy treatments
- Acquired equipment appropriate for the testing or treatment of breast cancer
- Met or exceeded quality assurance and safety guidelines



## BERMUDA NATIONAL STANDARDS CERTIFICATION

The Bermuda National Standards Committee created a set of best practice standards for Bermuda's non-profits, charities and quangos who would like a process that allows them to demonstrate a high standard of practice which exceeds the basic requirements. The certification process involved a detailed review and analysis of our organisation's administrative operations against international standards of best practice for charitable organisations. Bermuda Cancer and Health Centre has successfully earned this certification and continues to fine-tune their processes for a more efficient and effective operation.

# DONATIONS

**CORPORATE MATCHING GIFTS ARE A VALUABLE WAY FOR SUPPORTERS OF THE CENTRE TO MAXIMIZE PERSONAL CONTRIBUTIONS TO OUR CHARITY AND INCREASE THE IMPACT OF THEIR GIFT. THANK YOU TO THE FOLLOWING COMPANIES FOR SUPPORTING THEIR STAFF DONATIONS AND ALLOWING THEM TO MAXIMIZE THEIR CONTRIBUTIONS:**

## CORPORATE MATCHING

Corporate matching gifts are a valuable way for supporters of the Centre to maximise personal contributions to our charity and increase the impact of their gift. Many companies provide matching donations thereby doubling, tripling or quadrupling the personal donation made by their staff. Thank you to the following companies for supporting their staff donations and allowing them to maximize their contributions:

ACE Foundation  
Allied World Assurance Company (AWAC)  
AMLIN Bermuda  
AON Insurance Mangers (Bermuda Ltd.)  
ARCH Reinsurance  
Argo Group  
Bermuda Chamber of Commerce  
Bacardi International  
Endurance Specialty Insurance  
FIL Limited  
Ironshore  
Liberty Mutual  
Marsh IAS Management Services  
OIL Insurance Limited  
PartnerRe Limited  
RenaissanceRe  
Pricewaterhousecoopers Ltd  
Validus Services (Bermuda)  
XL Catlin  
XL Foundation  
Zurich International (Bermuda) Ltd.

## UNION DUES

Many employees opt to designate their union dues to support a charity of their choice. The Centre was honoured to be one of the recipients of these donations and would like to acknowledge those employees of the following companies for their support:

Bermuda Cablevision  
Bermuda Government  
Newstead Belmont Hills  
Bermuda Hospitals Board  
Bermuda Telephone Co.  
The Reefs

## CHARITABLE GIVING IN MEMORY

Charitable donations can be made through gifts of life insurance, outright gifts of cash, pledges, securities, and bequests in wills. Our heartfelt thank you to all who donated in honour of a departed loved one this year.

J. Henry Dallas  
Yvonne Smith  
Rita Griffin  
Maxwell Thompson  
Beverly Winifred Mae Robinson

## HONORING OTHERS

Making a charitable donation in the name of a loved one is a meaningful way to give for any occasion. In 2015, the Centre received gifts in lieu of celebrating survivorship, birthdays and anniversaries. Thank you for choosing to make a donation to Bermuda Cancer and Health Centre in honour of your loved one.

Isobel Simons  
Alicia Cotti

## DONOR HONOR ROLL

Their philanthropic support helped to improve patient care, the purchase of cancer detection equipment, and funding for cancer prevention programmes. These donors contributed over \$2,000 each during the 2015 fiscal year:

A.P. Moller (Bermuda) Limited  
Conyers Dill & Pearman  
Schroder Family  
Bolton Charitable Foundation  
Edward Roberts  
The Green Family  
Bermuda High School for Girls Association  
RenaissanceRe  
The John E & Janet E McCulloch Foundation  
CellOne  
Restless Native  
Walker Arcade Co. Ltd.  
Clarien Bank  
Sandra Charitable Trust

## SPONSORS & SPECIAL SUPPORTERS

Chrissy Wetherhill & Bosom Buddies  
Cedarbridge Academy  
North Village Community Club  
A.S. Coopers  
Christ Church Warwick & Keith's Kitchen  
Relay For Life Teams and Sponsors  
Bermuda Timing Systems Ltd.  
Freisenbruch-Meyer  
Saltus Grammar School  
BF&M Insurance Group  
Gorham's Limited  
St. Baldrick's Foundation  
Butterfield & Vallis  
GNT Melanie Correia  
XL Catlin  
Catlin Insurance Co. Ltd.  
KPMG  
Warwick Academy





# BOARD OF DIRECTORS



## GLEN GIBBONS

**Board President since 2008**  
Finance & Investment Committee  
Senior Vice President  
BF&M Ltd.



## JENNIFER HAWORTH

**Appointed 2007**  
Chairman of Governance &  
Compliance Committee  
Litigation Attorney  
MJM Ltd.



## JUDY WHITE

**Vice President since 2007**  
Finance & Investment Committee  
President  
CTFS Bermuda Ltd.



## WENDY DUNNE

**Appointed 2011**  
Finance & Investment  
and Scholarship Committee  
Retired Insurance Underwriter



## LYNDA DAVIDSON-LEADER

**Corporate Secretary**  
**Appointed 2011**  
Governance & Compliance Committee  
Vice President of Corporate Services  
BF&M Ltd.



## LARRY DENNIS

**Appointed 2007**  
Chairman of Finance & Investment  
and Scholarship Committee  
Retired Auditor General



## DENTON WILLIAMS

**Appointed 2011**  
Chairman of Clinical Committee  
COO  
BELCO



## DR. HENRY DOWLING

**Appointed 2011**  
Clinical Committee  
Family Practitioner  
Associates in Integrated Health



## GARY CARR

**Appointed 2004**  
Governance & Compliance Committee  
Director  
Delphi



## TARA CURTIS

**Appointed 2008**  
Governance & Compliance,  
Finance & Investment  
and Clinical Committees  
Executive Director  
Bermuda Cancer and Health Centre



**KPMG Audit Limited**  
Crown House  
4 Par-la-Ville Road  
Hamilton HM 08 Bermuda

Mailing Address:  
P.O. Box HM 906  
Hamilton HM DX Bermuda

Telephone +1 441 295 5063  
Fax +1 441 295 9132  
Internet [www.kpmg.bm](http://www.kpmg.bm)

## INDEPENDENT AUDITOR'S REPORT

To the Members of Bermuda Cancer and Health Centre

We have audited the accompanying financial statements of Bermuda Cancer and Health Centre (the "Centre"), which comprise the statement of financial position as at December 31, 2015, the statements of revenues and expenditures, changes in net assets and cash flows for the year then ended, and notes, comprising a summary of significant accounting policies and other explanatory information.

### Management's Responsibility for the Financial Statements

Management is responsible for the preparation and fair presentation of these financial statements in accordance with accounting standards for not-for-profit organizations generally accepted in Bermuda and Canada and for such internal control as management determines is necessary to enable the preparation of financial statements that are free from material misstatement, whether due to fraud or error.

### Auditor's Responsibility

Our responsibility is to express an opinion on these financial statements based on our audit. We conducted our audit in accordance with auditing standards generally accepted in Bermuda and Canada. Those standards require that we comply with ethical requirements and plan and perform an audit to obtain reasonable assurance about whether the financial statements are free from material misstatement.

An audit involves performing procedures to obtain audit evidence about the amounts and disclosures in the financial statements. The procedures selected depend on our judgment, including the assessment of the risks of material misstatement of the financial statements, whether due to fraud or error. In making those risk assessments, we consider internal control relevant to the Centre's preparation and fair presentation of the financial statements in order to design audit procedures that are appropriate in the circumstances, but not for the purpose of expressing an opinion on the effectiveness of the Centre's internal control. An audit also includes evaluating the appropriateness of accounting policies used and the reasonableness of accounting estimates made by management, as well as evaluating the overall presentation of the financial statements.

We believe that the audit evidence we have obtained is sufficient and appropriate to provide a basis for our qualified audit opinion.

### Basis for Qualified Opinion

In common with many charitable organizations, the Centre derives a portion of its revenues from the general public in the form of donations and contributions, the completeness of which is not susceptible to satisfactory audit verification. Accordingly, our verification of donations and deferred contributions was limited to the amounts recorded in the records of the Centre. Therefore, we were not able to determine whether any adjustments might be necessary to donations, amortization of deferred contributions and excess of revenues over expenditures reported in the statement of revenues and expenses for the year ended December 31, 2015, and deferred contributions and net assets reported in the statement of financial position as at that date.



### **Qualified Opinion**

In our opinion, except for the possible effects of the matter described in the Basis for Qualified Opinion paragraph, these financial statements present fairly, in all material respects, the financial position of the Centre as at December 31, 2015, and its results of operations and its cash flows for the year then ended in accordance with accounting standards for not-for-profit organizations generally **accepted** in Bermuda and Canada.

*KPMG Audit Limited*

Chartered Professional Accountants  
Hamilton, Bermuda  
March 17, 2016



**BERMUDA CANCER AND HEALTH CENTRE**


Statement of Financial Position

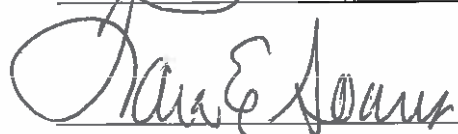
As at December 31, 2015  
(Expressed in Bermuda Dollars)

	<u>2015</u>	<u>2014</u>
<b>Assets</b>		
<b>Current assets</b>		
Cash and cash equivalents	\$ 3,074,262	\$ 2,331,628
Accounts receivable	385,669	251,328
Prepaid expenses	109,047	208,858
Inventories (Note 2(d))	<u>109,569</u>	<u>115,795</u>
Total current assets	3,678,547	2,907,609
Investments (Note 3)	139,611	141,681
Term deposits (Note 3)	500,000	900,000
Capital assets (Note 4)	<u>3,565,885</u>	<u>3,868,084</u>
Total assets	<u>\$ 7,884,043</u>	<u>\$ 7,817,374</u>
<b>Liabilities and net assets</b>		
<b>Current liabilities</b>		
Accounts payable and accrued liabilities (Notes 9 and 13)	<u>\$ 293,936</u>	<u>\$ 312,221</u>
Total current liabilities	293,936	312,221
Deferred contributions (Note 5)	<u>3,817,278</u>	<u>3,718,364</u>
Total liabilities	<u>4,111,214</u>	<u>4,030,585</u>
<b>Net assets</b>		
Unrestricted net assets	777,847	2,730,904
Restricted net assets (Note 6)	<u>2,994,982</u>	<u>1,055,885</u>
Total net assets	<u>3,772,829</u>	<u>3,786,789</u>
Total liabilities and net assets	<u>\$ 7,884,043</u>	<u>\$ 7,817,374</u>

*The accompanying notes are an integral part of these financial statements*

On behalf of the Board of Directors:

  
 \_\_\_\_\_ Director

  
 \_\_\_\_\_ Director

## BERMUDA CANCER AND HEALTH CENTRE

### Statement of Revenues and Expenditures

For the year ended December 31, 2015  
(Expressed in Bermuda Dollars)

	<u>2015</u>	<u>2014</u>
<b>Revenues</b>		
Mammography services	\$ 1,573,680	\$ 1,446,407
Densitometry services	656,857	689,763
Amortization of deferred contributions (Note 5)	440,695	442,335
Donations	374,079	448,683
Ultrasound services	317,126	386,702
Donations for uninsured and underinsured patients	120,244	157,110
Biopsy service - breast	108,012	109,581
Prescription sales	61,576	66,761
Interest income	19,155	39,448
Rent and other income	9,180	16,924
Dividends from investments	4,112	5,579
Biopsy service – prostate	<u>2,260</u>	<u>4,590</u>
Total revenues	<u>3,686,976</u>	<u>3,813,883</u>
<b>Expenditures</b>		
General and administrative (Note 7)	2,912,461	2,716,272
Mammography services	220,548	236,695
Radiotherapy expenses	158,341	—
Fundraising and education	144,310	231,642
Donation to uninsured patients (Note 8)	97,837	86,232
Prescription purchases (Note 2 (d))	59,394	62,305
Densitometry services	31,010	32,280
Subsidy for underinsured patients (Note 8)	30,911	59,417
Ultrasound services	25,549	30,010
Biopsy expenses - breast	16,863	28,465
Net change in fair value of investments (Note 3)	2,070	3,841
Biopsy expenses – prostate	<u>1,642</u>	<u>1,748</u>
Total expenditures	<u>3,700,936</u>	<u>3,488,907</u>
(Deficit) excess of revenues over expenditures	<u>\$ (13,960)</u>	<u>\$ 324,976</u>

*The accompanying notes are an integral part of these financial statements*

**BERMUDA CANCER AND HEALTH CENTRE**

Statement of Changes in Net Assets

Year ended December 31, 2015  
(Expressed in Bermuda Dollars)

	Restricted net assets (Note 6)						2014 Total
	Radiation Therapy	Scholarship	Cancer Information Services	Under/ uninsured	Men's Health	Total	
Balance beginning of year	\$ 1,823,128	\$ 530,856	\$ 297,488	\$ 36,595	\$ 190,946	\$ 1,055,885	\$ 3,786,789
(Deficit) excess of revenues over expenses	—	10,617	(10,458)	109,594	6,216	1,939,097	(13,960)
Balance at end of year	\$ 1,823,128	\$ 541,473	\$ 287,030	\$ 146,189	\$ 197,162	\$ 2,994,982	\$ 3,772,829
							\$ 3,461,813
							Unrestricted net assets
							\$ 2,730,904
							(1,953,057)
							\$ 3,461,813
							\$ 3,786,789
							\$ 3,772,829
							\$ 3,786,789

*The accompanying notes are an integral part of these financial statements*

## BERMUDA CANCER AND HEALTH CENTRE

### Statement of Cash Flows

For the year ended December 31, 2015  
(Expressed in Bermuda Dollars)

	<u>2015</u>	<u>2014</u>
<b>Operating activities</b>		
(Deficit) excess of revenues over expenditures	\$ (13,960)	\$ 324,976
Adjustments for:		
Depreciation of capital assets	551,460	477,972
Amortization of deferred contributions	(440,695)	(442,335)
Net change in fair value of investments	2,070	3,841
Loss on disposal of capital assets	—	740
Changes in non-cash working capital balances:		
Accounts receivable	(134,341)	(10,866)
Prepaid expenses	99,811	(161,951)
Inventories	6,226	(65,352)
Accounts payable and accrued liabilities	<u>(18,285)</u>	<u>(5,145)</u>
Cash provided by operating activities	<u>52,286</u>	<u>121,880</u>
<b>Investing activities</b>		
Redemption of term deposits, net	400,000	400,000
Purchase of capital assets	<u>(249,261)</u>	<u>(120,794)</u>
Cash provided by investing activities	<u>150,739</u>	<u>279,206</u>
<b>Financing activities</b>		
Net cash contributions received for capital campaigns (Note 5)	<u>539,609</u>	<u>443,071</u>
Cash provided by financing activities	<u>539,609</u>	<u>443,071</u>
Net increase in cash and cash equivalents	742,634	844,157
Cash and cash equivalents at beginning of year	<u>2,331,628</u>	<u>1,487,471</u>
Cash and cash equivalents at end of year	<u>\$ 3,074,262</u>	<u>\$ 2,331,628</u>

*The accompanying notes are an integral part of these financial statements*

## BERMUDA CANCER AND HEALTH CENTRE

### Notes to Financial Statements

December 31, 2015

---

#### 1. **General**

The Bermuda Cancer and Health Centre (the “Centre”) is a registered charity formed on July 17, 1945 for the purpose of assisting tuberculosis, cancer and diabetic patients in Bermuda. On July 2, 2007, the Centre converted from an unincorporated Association to a company limited by guarantee and changed its name from Bermuda Tuberculosis, Cancer and Health Association to Bermuda Cancer & Health Resource Centre. On August 31, 2007, the Centre changed its name to Bermuda Cancer and Health Centre.

#### 2. **Significant accounting policies**

These financial statements were prepared in accordance with accounting standards for not-for-profit organizations generally accepted in Bermuda and Canada (“ASNFP”) contained in Part III of the Chartered Professional Accountants of Canada (“CPA Canada”) Handbook – Accounting, and include the following significant accounting policies:

##### *(a) Use of estimates*

The preparation of these financial statements in conformity with ASNFP requires management to make estimates and assumptions that affect the reported amounts of assets and liabilities and disclosure of contingent assets and liabilities at the date of the financial statements and the reported amounts of revenues and expenditures during the period. These estimates are reviewed periodically and adjustments are made to revenues and expenditures as appropriate in the year they become known.

##### *(b) Revenue recognition*

The Centre follows the deferral method of accounting for contributions. Restricted contributions that relate to expenses of future periods are deferred and recognized as revenue in the period in which the related expenses are incurred. Unrestricted contributions are recognized as revenue when received or receivable if the amount to be received can be reasonably estimated and collection is reasonably assured.

Revenues from services are recognized when the service is provided to the client and the collectability of the related receivable from the client’s insurance provider is reasonably assured.

All other income, except for contributions, is recognized on the accrual basis when earned.

##### *(c) Cash and cash equivalents*

The Centre considers all cash on hand, deposits with financial institutions that can be withdrawn without notice or penalty, and short-term deposits with an original maturity of ninety days or less as equivalent to cash. Interest earned on cash and cash equivalents is at rates ranging between nil% and 0.50% (2014 - nil% and 0.50%) per annum.

##### *(d) Inventories*

Inventories are carried at the lower of cost and net realizable value, and are valued on a first-in, first-out basis. Included in prescription purchases are recognized inventory expenses of \$59,394 (2014 - \$62,305). There were no inventories written off during the year (2014 - \$nil) and no provision for obsolete or slow-moving inventories at the reporting date (2014 - \$nil).

## BERMUDA CANCER AND HEALTH CENTRE

Notes to Financial Statements

December 31, 2015

### 2. Significant accounting policies (continued)

#### (e) Capital assets

Capital assets are recorded at cost less accumulated depreciation. Land is not depreciated. Depreciation of buildings, equipment and other assets is provided over the estimated useful lives of the assets on a straight line basis as follows:

Buildings	20 years
Building improvements	10 years
Medical equipment	5-10 years
Vehicle	5 years
Furniture and fixtures	5 years
Office equipment	3 years
Website development	5 years

Capital assets are reviewed for impairment whenever events or changes in circumstances indicate that the carrying amount of an asset may not be recoverable. Recoverability of assets to be held and used is measured by a comparison of the carrying amount of an asset to estimated undiscounted future cash flows expected to be generated by the asset. If the carrying amount of an asset exceeds its estimated future cash flows, an impairment charge is recognized by the amount by which the carrying amount of the asset exceeds the fair value of the asset.

#### (f) Donated services

Volunteer efforts and non-cash donations are reflected in the financial statements only when a fair value can be reasonably estimated.

#### (g) Financial instruments

Financial instruments consist of cash and cash equivalents, term deposits, investments, accounts receivable and accounts payable.

Investments quoted in an active market are carried at fair value, with the related net change in fair value included in revenues and expenditures. The fair value of the investments is based on quoted market values. Transaction costs are recognized in revenues and expenditures in the period incurred.

Purchases and sales of investments are accounted for at the transaction date.

Accounts receivable are measured at amortized cost using the effective interest method, less any adjustment for impairment.

Accounts payable and accrued liabilities are measured at amortized cost using the effective interest method.

Financial assets measured at amortized cost are tested for impairment when there are indicators of impairment. The amount of the write-down is recognized in the statement of revenues and expenditures. Any previously recognized impairment loss may be reversed to the extent of the improvement, directly or by adjusting the allowance account, provided it is no greater than the amount that would have been reported at the date of the reversal had the impairment not been recognized previously. The amount of the reversal is recognized in the statement of revenues and expenditures.

## BERMUDA CANCER AND HEALTH CENTRE

Notes to Financial Statements

December 31, 2015

### 3. Investments and term deposits

Investments include marketable securities consisting of:

Number of <u>shares</u>	<u>Securities held</u>	2015		2014	
		<u>Cost</u>	<u>Fair value</u>	<u>Cost</u>	<u>Fair value</u>
23,182	Butterfield Bank	\$ 38,871	\$ 46,132	\$ 38,871	\$ 46,364
4,000	Somers Limited (formerly Bermuda Commercial Bank Ltd.)	21,575	57,000	21,575	57,000
4,509	Ascendant Group Ltd.	70,712	22,545	70,712	24,349
3,492	KeyTech Limited	<u>49,213</u>	<u>13,934</u>	<u>49,213</u>	<u>13,968</u>
		\$ 180,371	\$ 139,611	\$ 180,371	\$ 141,681

As at December 31, 2015, the Centre has \$500,000 (2014 - \$900,000) of its cash in 48 month certificate of deposit with a Bermuda bank with an annual interest rate of 2.5% payable upon maturity.

### 4. Capital assets

Capital assets consist of:

	2015			2014
	<u>Cost</u>	<u>Accumulated depreciation</u>	<u>Net book value</u>	<u>Net book value</u>
Land	\$ 987,428	\$ —	\$ 987,428	\$ 987,428
Building and building improvements	3,709,986	2,219,562	1,490,424	1,678,454
Medical equipment	2,613,789	1,780,971	832,818	1,083,267
Vehicle	17,630	8,617	9,013	10,776
Office equipment and furniture	754,499	520,392	234,107	105,186
Website development	<u>36,074</u>	<u>23,979</u>	<u>12,095</u>	<u>2,973</u>
	\$ 8,119,406	\$ 4,553,521	\$ 3,565,885	\$ 3,868,084

The cost and accumulated depreciation of capital assets at December 31, 2014 were \$8,058,836 and \$4,190,752, respectively. During the year the Centre disposed of fully depreciated capital assets with a cost of \$188,691 which were no longer in use at nil proceeds.

## BERMUDA CANCER AND HEALTH CENTRE

### Notes to Financial Statements

December 31, 2015

#### 5. Deferred contributions

Deferred contributions represent unamortized restricted contributions for capital campaigns. Changes in the deferred contributions balance are as follows:

	<u>2015</u>	<u>2014</u>
Balance, beginning of year	\$ 3,718,364	\$ 3,717,628
Net amount received during the current year	539,609	443,071
Amounts amortized to revenue in the year	<u>(440,695)</u>	<u>(442,335)</u>
Balance, end of period	<u>\$ 3,817,278</u>	<u>\$ 3,718,364</u>

In 2000, the Centre launched a building campaign to raise \$4 million for a new Cancer Resource Centre. In May 2014, the Centre launched a new capital campaign for a Radiation Treatment Centre. The deferred contributions balance comprises amounts contributed during the current year and prior years, which is externally restricted for the building of, and new equipment for, the Centre.

#### 6. Restricted net assets

Restricted net assets represent unspent resources internally restricted for the Scholarship Fund as well as externally restricted capital campaign funds. The externally restricted funds include the Cancer Information Services ("CIS"), Radiation Therapy, Men's Health and Underinsured/Uninsured Fund.

#### 7. General and administrative expenditures

	<u>2015</u>	<u>2014</u>
Salaries and related costs (Note 9)	\$ 1,521,842	\$ 1,746,397
Depreciation of capital assets	551,460	477,972
Radiologist support and outsourced costs	422,699	98,006
Professional fees	97,961	93,805
Building operation and maintenance	95,252	87,682
Insurance	61,546	61,804
Telephone and postage	47,042	37,302
Membership and licence fees	31,982	17,947
Office supplies	25,379	27,923
Electricity and water	22,043	27,467
Bank charges	13,910	17,626
Office equipment maintenance	12,169	11,481
Miscellaneous	6,049	8,493
System implementation expenses	2,727	1,627
Annual charity fee	400	-
Loss on disposal of capital assets	<u>-</u>	<u>740</u>
	<u>\$ 2,912,461</u>	<u>\$ 2,716,272</u>



## BERMUDA CANCER AND HEALTH CENTRE

Notes to Financial Statements

December 31, 2015

---

### 8. **Donation to uninsured patients and subsidy for underinsured patients**

The donation to uninsured patients of \$97,837 (2014 - \$86,232) represents services donated by the Centre for patients without insurance. The subsidy for underinsured patients of \$30,911 (2014 - \$59,417) represents services not covered by other agencies.

### 9. **Employee future benefits**

The Centre has a defined contribution pension plan providing pension benefits to all of its employees. Employee pension contributions of 5% are matched by the Centre. Pension expense incurred by the Centre in the current year was \$61,973 (2014 - \$64,868) and is included in general and administrative expenditures under salaries and related costs (Note 7). The pension liability as at December 31, 2015 amounted to \$nil (2014 - \$2,438) and is included in accounts payable and accrued liabilities in the statement of financial position.

### 10. **Financial instruments**

The estimated fair values of financial instruments, including cash and cash equivalents, term deposits, accounts receivable and accounts payable approximate their carrying values due to their relative short-term nature or the fact that they attract market rates of interest. The estimated fair value of marketable securities based on year-end quoted market bid prices is disclosed in Note 3.

The estimates of fair values presented herein are subjective in nature and are not necessarily indicative of the amounts that the Centre would realize in a current market exchange. Certain items such as inventories, deferred contributions and capital assets are excluded from the fair value disclosure. Thus the individual fair value amounts cannot be aggregated to determine the underlying fair value of the Centre.

The Centre is not exposed to any significant interest rate risk, credit risk or liquidity risk. The Centre is exposed to market risk with respect to its marketable securities which comprise investments in Bermuda listed companies quoted on the Bermuda Stock Exchange.

The Centre holds cash and cash equivalents and term deposits with three Bermuda-based financial institutions which have credit ratings of BBB to A+. Management believes that the Centre is not exposed to any significant concentration of credit risk. The Centre monitors its accounts receivable balances and believes that no provision for impairment of accounts receivable (2014 - \$nil) is required.

### 11. **Related party transactions**

During the normal course of its operations, the Centre purchased employee health benefits and property contents and directors and others liability insurance of \$153,071 (2014 - \$158,986) and \$33,951 (2014 - \$35,045) respectively, from BF&M Ltd. where a Board member of the Centre is the Senior Vice President. In addition, the Centre has a defined contribution pension plan (Note 9) administered by BF&M Ltd. The Centre also paid expenses related to HR consultancy, immigration processing, accounting services and staff professional development training of \$43,152 (2014 - \$41,300) to Expertise Limited, where one of the partners is the spouse of a Board member of the Centre.

## **BERMUDA CANCER AND HEALTH CENTRE**

Notes to Financial Statements

December 31, 2015

---

### **12. Capital management**

The Centre defines capital, for its own purposes, as restricted and unrestricted fund balances. During the year the Centre's objective when managing capital, which was unchanged from previous years, was to hold sufficient unrestricted funds to enable it to withstand negative unexpected financial events and continue as a going concern. The Centre seeks to achieve this objective by holding sufficient cash and cash equivalents to maintain liquidity and enable it to meet its obligations as they become due. The Centre is not subject to any externally imposed requirements on capital.

### **13. Government remittances payable**

Included in accounts payable and accrued liabilities are government remittances payable of \$24,929 (2014 - \$25,670).